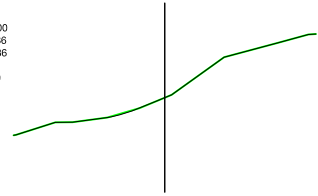
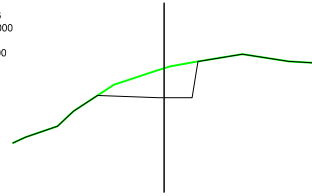


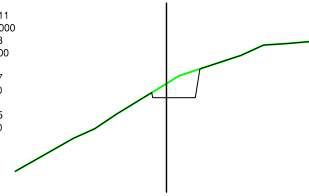
Perfil N. 1
P.K.=0,000
Zi=-10,586
Zr=-10,586
Sl=0,000
Sd=0,000
Sv=0,000



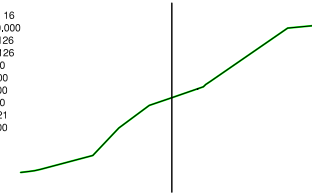
Perfil N. 6
P.K.=10,000
Zi=-9,225
Zr=-10,000
Sl=0,000
Sd=1,494
Sv=0,000
Vl=0,001
Vd=-2,133
Vv=0,000



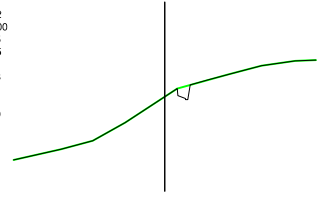
Perfil N. 11
P.K.=20,000
Zi=-9,629
Zr=-10,000
Sl=0,001
Sd=0,577
Sv=0,000
Vl=0,001
Vd=-1,245
Vv=0,000



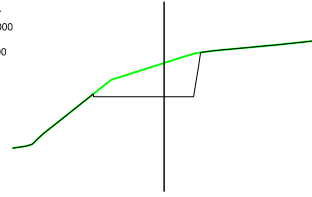
Perfil N. 16
P.K.=30,000
Zi=-10,126
Zr=-10,126
Sl=0,000
Sd=0,000
Sv=0,000
Vl=0,000
Vd=-0,021
Vv=0,000



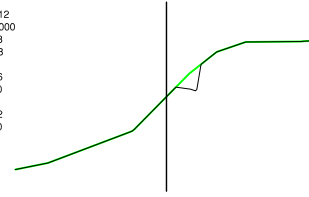
Perfil N. 2
P.K.=2,000
Zi=-9,925
Zr=-10,000
Sl=0,000
Sd=0,088
Sv=0,000
Vl=0,000
Vd=0,089
Vv=0,000



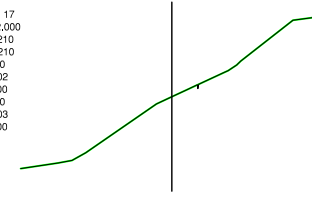
Perfil N. 7
P.K.=12,000
Zi=-9,106
Zr=-10,000
Sl=0,000
Sd=1,960
Sv=0,000
Vl=0,001
Vd=3,454
Vv=0,000



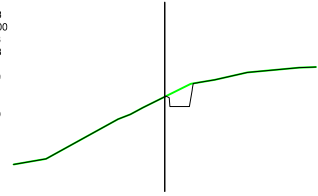
Perfil N. 12
P.K.=22,000
Zi=-9,953
Zr=-9,953
Sl=0,000
Sd=0,206
Sv=0,000
Vl=0,001
Vd=0,782
Vv=0,000



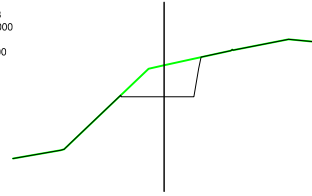
Perfil N. 17
P.K.=32,000
Zi=-10,210
Zr=-10,210
Sl=0,000
Sd=0,002
Sv=0,000
Vl=0,000
Vd=0,003
Vv=0,000



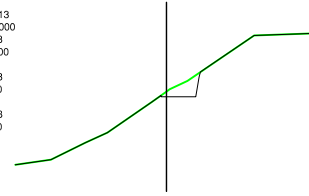
Perfil N. 3
P.K.=4,000
Zi=-9,743
Zr=-9,743
Sl=0,000
Sd=0,270
Sv=0,000
Vl=0,000
Vd=0,359
Vv=0,000



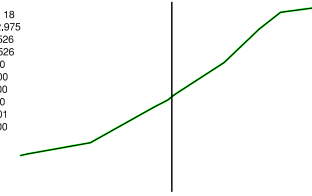
Perfil N. 8
P.K.=14,000
Zi=-9,186
Zr=-10,000
Sl=0,000
Sd=1,430
Sv=0,000
Vl=0,001
Vd=3,390
Vv=0,000



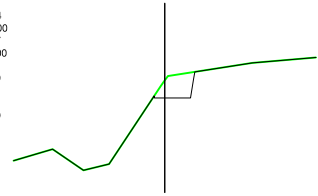
Perfil N. 13
P.K.=24,000
Zi=-9,863
Zr=-10,000
Sl=0,000
Sd=0,313
Sv=0,000
Vl=0,000
Vd=0,518
Vv=0,000



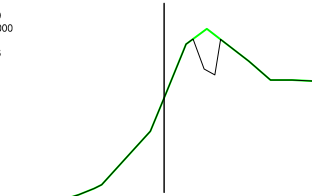
Perfil N. 18
P.K.=32,975
Zi=-10,526
Zr=-10,526
Sl=0,000
Sd=0,000
Sv=0,000
Vl=0,000
Vd=0,001
Vv=0,000



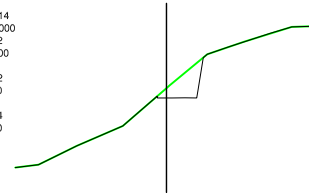
Perfil N. 4
P.K.=6,000
Zi=-9,537
Zr=-10,000
Sl=0,000
Sd=0,529
Sv=0,000
Vl=0,000
Vd=0,799
Vv=0,000



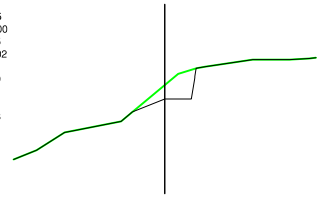
Perfil N. 9
P.K.=16,000
Zi=-8,906
Zr=-8,906
Sl=0,000
Sd=0,531
Sv=0,000
Vl=0,001
Vd=1,981
Vv=0,000



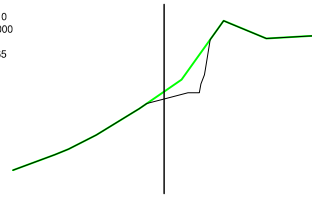
Perfil N. 14
P.K.=26,000
Zi=-9,742
Zr=-10,000
Sl=0,000
Sd=0,592
Sv=0,000
Vl=0,000
Vd=0,304
Vv=0,000



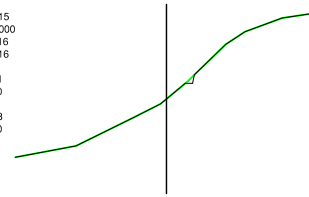
Perfil N. 5
P.K.=8,000
Zi=-9,635
Zr=-10,002
Sl=0,000
Sd=0,639
Sv=0,000
Vl=0,000
Vd=1,168
Vv=0,000



Perfil N. 10
P.K.=18,000
Zi=-9,969
Zr=-10,165
Sl=0,000
Sd=0,668
Sv=0,000
Vl=0,000
Vd=1,200
Vv=0,000



Perfil N. 15
P.K.=28,000
Zi=-10,416
Zr=-10,416
Sl=0,000
Sd=0,021
Sv=0,000
Vl=0,000
Vd=0,613
Vv=0,000



TODOS LOS PERFILES ESTÁN SEPARADOS ENTRE ELLOS UNA DISTANCIA DE 2m



Puerto de Ferrol

Autoridad Portuaria de Ferrol-San Cibrao

PROYECTO DE MEJORA DE CALADOS EN EL CANAL DE ENTRADA AL INTERIOR DE LA RÍA DE FERROL		PLANO Nº 7.01 1 de 1
DENOMINACION DEL PLANO PERFILES TRANSVERSALES DE DRAGADO ÁREA 1 A LA COTA -10		FECHA MARZO 2010 ESCALA 1/200
VºBº y APROBADO TÉCNICAMENTE EL DIRECTOR EMILIO F. GARCÍA GARCÍA		EL AUTOR DEL PROYECTO: JESÚS BUSTO MÍGUEZ